

BISON PREP-New Student Orientation

Interpersonal Violence Prevention Program (IVPP)

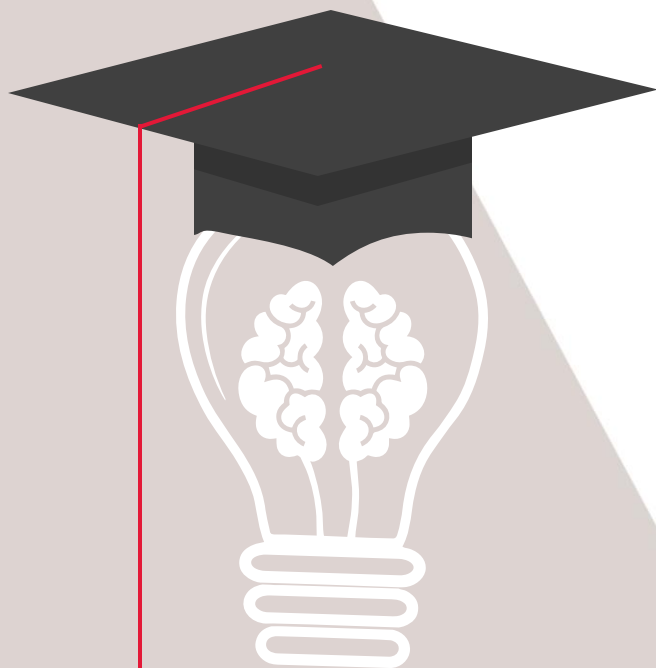
May 23, 2024

Director – Shakira Jarvis, MPH

Advocate Specialist – Teaira Garnett



Agenda



- 1 Welcome
- 2 The Mission of IVPP
- 3 Defining Interpersonal Violence
- 4 Advocacy + Support Services
- 5 When to Seek IVPP
- 6 Connecting with IVPP

IVPP's Mission

The mission of IVPP is to enhance student quality of life through **survivor advocacy** and campus-wide **prevention education, training, and skill building** to reduce the impacts of dating, domestic and intimate partner violence, sexual assault and harassment, and stalking.

- We provide **education** and **training** to the campus community in order to **prevent interpersonal violence**:
 - Sexual Assault and Harassment
 - Dating and Domestic Violence
 - Stalking
- Provide **direct services** to students who experience interpersonal violence

What Is Intimate Partner/ Dating Violence?

- Intimate partner violence (IPV) is abuse or aggression that occurs in a romantic relationship. “Intimate partner” refers to both current and former spouses and dating partners.
- Sexual assault includes rape or attempted rape, and any unwanted sexual contact or threats. It includes words as well as actions against a person's will and without their consent.
- Intimate Partner Violence can include any of the following types of behavior:
 - **Physical violence**
 - **Sexual violence**
 - **Psychological aggression**
 - **Stalking**



Advocacy + Support Services Provided

The Office of Interpersonal Violence Prevention (IVPP)

- **Title IX Case Advisors** (as designated by Title IX)
- **Safety Planning**
 - Lock changes
 - Crisis housing
 - Access to food/clothing
 - Emergency Protection Orders
- **Civil Court Support**
 - Court Advocacy
 - Court Accompaniment
 - Protection Orders
 - Crime Victim Compensation
- **Rape/Forensic Exam Support**
 - Transport
 - Accompaniment
 - Explain Processes
- **Provide advocacy for students**
 - Healthy Relationship Workshops
 - Recognize healthy and unhealthy conflict
 - Identify red flags in unhealthy relationships
- **Access to on/off campus resources**
 - Counseling
 - Housing
 - Student Services
 - Student Health Center
 - Department of Public Safety
 - DC Rape Crisis Center
 - Metropolitan Police Department



Connect with IVPP When



Interpersonal Violence
Prevention Program

- **Someone needs support after an IPV incident (crisis or noncrisis)**
- Think you/someone you know may be experiencing IPV
- **Don't yet know if you/they are ready to make an official report, but you still need help and support**
- You Need to understand and connect to resources to heal from harm, abuse
- **You need to build skills/ prepare to: Communicate directly, end a relationship, ask someone out**
- Have Questions about Relationships, Intimacy +
- **Want to talk to someone about something privately so you can figure out what to do**

Bison PREP

[When To Seek IVPP]

Connecting with IVPP



Visit us in the Lower Tubman Quadrangle!



Shakira Jarvis, MPH (she | her)
Director | Office of Interpersonal Violence Prevention

✉ shakira.w.jarvis@howard.edu 📞 202-230-7645

I respond the fastest to **emails** and **MS Teams chats**.
If the light next to my door is on, I am on campus.

Office General Email	IVPPHU@howard.edu
IVPP Main Phone	202-806-5113
Advocate Specialist	202-836-1401

volunteer with IVPP: 




Teaira Garnett (she | her)
Advocate Specialist
Office of Interpersonal Violence Prevention

✉ teaira.garnett@howard.edu 📞 202-836-1401

I respond the fastest to **text messages** and **MS Teams chats**.
If the light next to my door is on, I am on campus.

Office General Email	IVPPHU@howard.edu
IVPP Main Phone	202-806-5113
Advocate Specialist	202-836-1401

volunteer with IVPP: 

Thank you!

