

BISON PREP-New Student Orientation

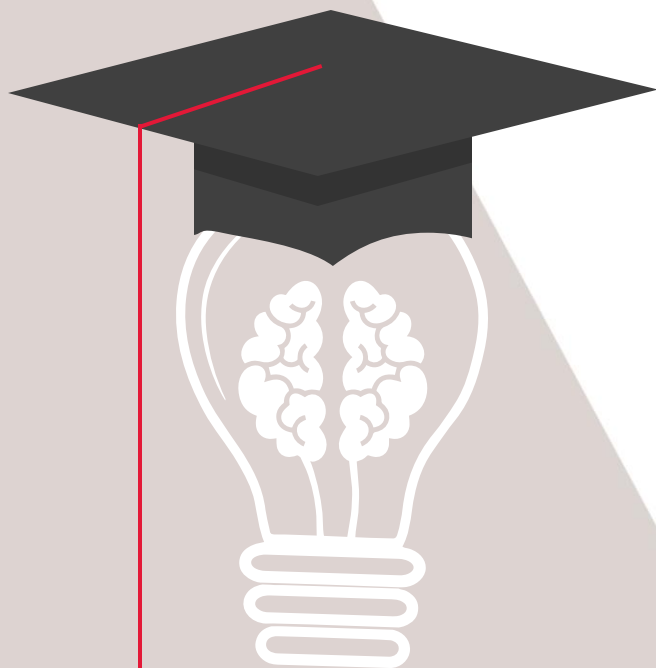
Placement Testing

ACE LEARNING
SUPPORT
SERVICES

A Division of the Office of Undergraduate Studies

Jasmine Fleming
Learning Support Coach
Office of Undergraduate Studies

Agenda



- 1 Placement Testing Overview
- 2 Math Placement Testing (Alek's)
- 3 World Languages Placement Testing (Avant)
- 4 English Placement Testing (Accuplacer)

Placement Testing

ACE Learning Support Services facilitates placement testing for new and continuing students. The tests provide accurate course placement based on student's skills, abilities, and needs in reading, writing, foreign Language and mathematics.

Testing Platforms used:

- **Alek's** (Math Placement exams)

All students are REQUIRED to take the Math Placement exam except for students transferring in a Math and/or have taken the AP Calculus BC exam. (Contact your academic advisor for more information)

- **Avant** (World Language Placement exams)

Students who would like to continue with the World language that they took in high school, are encouraged to take the World Language Placement exam prior to registering for language courses to determine course placement. New students who have not taken a world language may register for 001 or 012.

- **Accuplacer** (English Placement exams)

SAT and ACT scores are used to determine if the exam is required.

SAT: Below 480 and ACT: Below 18 are required to take placement exam.

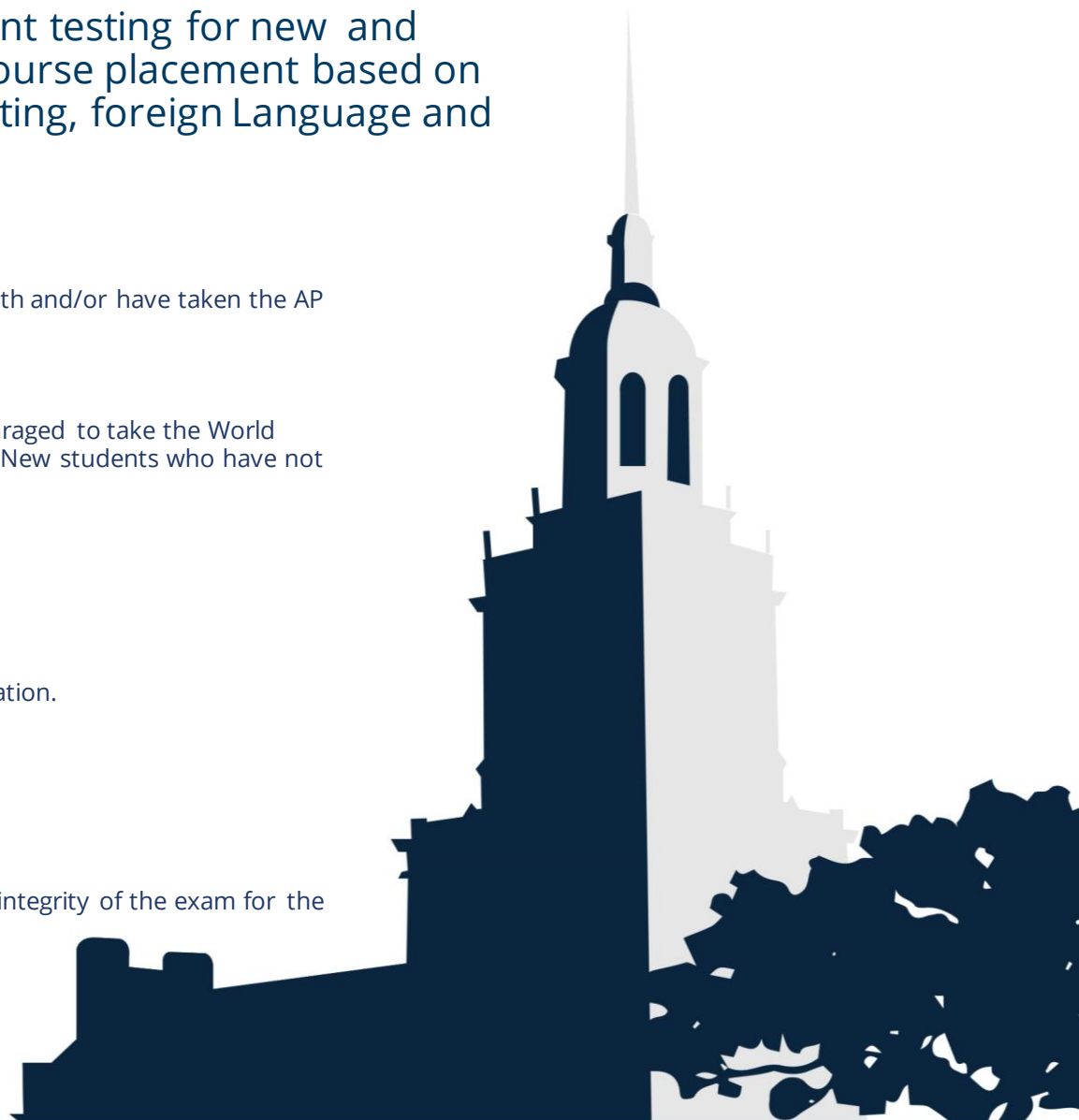
Students that do not submit SAT/ACT scores are required to take the placement exam prior to registration.

Proctor Resources:

ProctorU and Examity

- Virtual proctoring service are available to allow students to take exams online while ensuring the integrity of the exam for the institution.
- In-Person proctor is available for students upon request.

Contact ACE Learning Support for details



Math Placement Exam

STEP 1):

Math Pre-Assessment (Mandatory): The Math Pre-Assessment is administered through McGraw-Hill's Assessment and Learning in Knowledge Spaces (ALEKS) program. ALEKS is a web-based, artificially intelligent assessment and learning system that quickly and accurately assesses a student's level of mathematic proficiency. The ALEKS program will create a customized learning module specifically for you to improve your math deficiencies so that you are prepared for college-level mathematics. Using the course code **3TTXW-3VEEA**, and your email address in the ALEKS registration process will give you access to the Pre-Assessment. You must spend a minimum of three (3) hours in pre-assessment. However, we strongly recommend that you spend as much time as necessary in this review stage to reach your goal.

STEP 2):

Math Placement Exam (Mandatory): Howard University Math Placement Exam is administered through **ProctorU**, a live online proctoring service that allows you to take your exam from the comfort of your home. **ProctorU** is available 24/7, however, you will need to schedule your proctoring session **3 days in advance**. Please see the links below (**ProctorU - How It Works - TEST-TAKER VIDEO**) with instructions for creating your **ProctorU** account and scheduling the proctoring of your exam.

PLEASE NOTE: You must spend a minimum of **three (3) hours in the math pre-assessment/learning plan before moving forward to the math placement exam.**

[Download the Guardian Secure Proctoring Browser | Meazure Learning – Ensuring a safe and secure testing experience.](#)

[Access ALEKS, Here!](#)

[ProctorU Sign-Up, Here!](#)

[Test taker experience video](#)



World language Placement Exam

Please make sure to read and complete the Technology Preparation steps before registering for the test. You are responsible for ensuring the readiness of the computer you will be using for the test and that the following requirements are met.

PREPARING FOR THE AVANT ASSESSMENT

Follow the steps below to ensure proper setup for computer settings.

Step 1: Review AVANT's Remote Technology Requirements

This guide provides technical information for computers and networks to help you prepare for using Avant's assessments. Review the Remote Testing Technology Guide here:

<https://avantassessment.com/remote-testing/technology-guide-for-remote-testing>

Step 2: Review AVANT's Remote Test Taker Guide

These guides provide information and instructions specific to the assessment to help you prepare for taking the actual test or a sample test. Review the specific Remote Test Taker Guide for the test you will be taking here:

PLACE:

<https://avantassessment.com/remote-testing/place-remote-proctored-test-taker-guide>

Step 3: Complete a Sample Test

This is a quick and easy way to verify your technology is properly configured. Avant Sample Tests use the same technologies as the actual test so you will experience any technical issues in the Sample Test before registering for the actual test. Please make sure you can record your voice and **listen back to your recording**. If no button to listen back to your recording appears this means no recording was captured:

<https://avantassessment.com/sample-tests/>

World Language Placement Exam Continued...

Step 1: Register for your Remote Proctored Test

Use this link to register for your remote proctored test by selecting the correct language:

Arabic - <https://app.avantassessment.com/avantproctor-registration/1000333396>
French - <https://app.avantassessment.com/avantproctor-registration/1000333398>
German - <https://app.avantassessment.com/avantproctor-registration/1000333400>
Italian - <https://app.avantassessment.com/avantproctor-registration/1000333402>
Japanese - <https://app.avantassessment.com/avantproctor-registration/1000333404>
Korean - <https://app.avantassessment.com/avantproctor-registration/1000333418>
Mandarin Simplified - <https://app.avantassessment.com/avantproctor-registration/1000333406>
Mandarin Traditional - <https://app.avantassessment.com/avantproctor-registration/1000333408>
Spanish - <https://app.avantassessment.com/avantproctor-registration/1000333410>

Step 2: Follow the Directions in the Confirmation Email to schedule your test.

Use your Howard email address and legal first and last name to register for the test. **Please be sure to use your Howard email address and that it is accurate.**

Failure to use your Howard email address will result in your scores not being valid. Incorrect entry of your Howard email address will result in a delay in accessing the test.

Step 3: Once you submit the registration form, you will receive a scheduling link from the registration system. If you do not receive this email, please check your spam folder for an email from "noreply@avantassessment.com"

Step 4: Take your test at the scheduled time

Important Requirements

- You will need to have a web camera
- You will need a smart phone either iOS or Android
- You will need speakers and a microphone OR a headset with microphone
- You will need photo ID when scheduling your test and again when you take the test
- This is a timed test.
- Short breaks are not allowed so properly prepare yourself

If you have any questions or concerns, I can help answer your questions, and the Avant Support Team is also here to help.

Avant Support Team

support@avantassessment.com

888-713-7887



English Placement Exam

A **voucher** will be sent to your Howard University email account. Please check spam folder if you did not received the email in your inbox.

ACCUPLACER test(s) will be proctored using our **automated** remote proctoring service. With automated proctoring, the Examity system will guide you through the testing process without a live proctor. Your test session will be recorded and reviewed by your institution for academic integrity purposes. Please note that ACCUPLACER requires candidates who select to take exams via remote proctoring to complete a room scan. As an alternative to remote proctoring, candidates can work with their institution to get a new voucher and search for a physical test center for an in-person exam administration. To get started, follow the steps below:

1. Verify Computer Requirements.

Prior to your testing appointment, go to <https://www.accuplacer.org> and click on the Verify System button to make sure the computer you will use for testing meets ACCUPLACER system requirements to take a test.

Additionally, please go to <https://on.examity.com/V5/systemcheck> to verify that the computer you will use for testing meets Examity system requirements.

2. Register for an Account with Examity

Go to <https://on.examity.com/V5/x/217> to register for an account with Examity. You will need the voucher code provided below when creating your account.

Once you do, you will receive a confirmation email with user credentials to Examity.

To see an overview of the self registration and self enrollment process, click [here](#). **To see a video tutorial of this process, click [here](#).**

English Placement Exam

Continued...

3. Log into Examity and take your exam using the voucher code below.

You may take your ACCUPLACER test(s) at any time, 24 hours a day, 7 days a week with one exception. Due to weekly system maintenance, do **NOT** attempt to take your ACCUPLACER test on Sundays between 7pm and midnight ET. You must complete your test(s) prior to the voucher expiration date.

REMINDER: You are only required to enter your voucher code once during registration, not at test session start.

4. Select payment.

Depending upon your institution's policy, you may be required to pay for this service before scheduling your exam. If you are unsure if payment is required or if you have questions, check with your institution.

5. Practice for your test.

Prepare for ACCUPLACER with a free study app that gives you instant feedback and answer explanations, visit <https://practice.accuplacer.org/>.

For more information, please visit <https://www.examity.com/accuplacer> or review the student quick guide at https://www.examity.com/wp-content/uploads/2022/05/accuplacer_test_taker_auto_quick_guide_2022.pdf

Thank you!

Contact Information

Jasmine Fleming
Learning Support Coach
jasmine.fleming@howard.edu

ON CAMPUS!

**Academic Support Building - B, Room : 109
2441 4th Street, NW Washington, DC 2005**

ONLINE!

Download the BisonAdvisor App TODAY!

