

## Draft

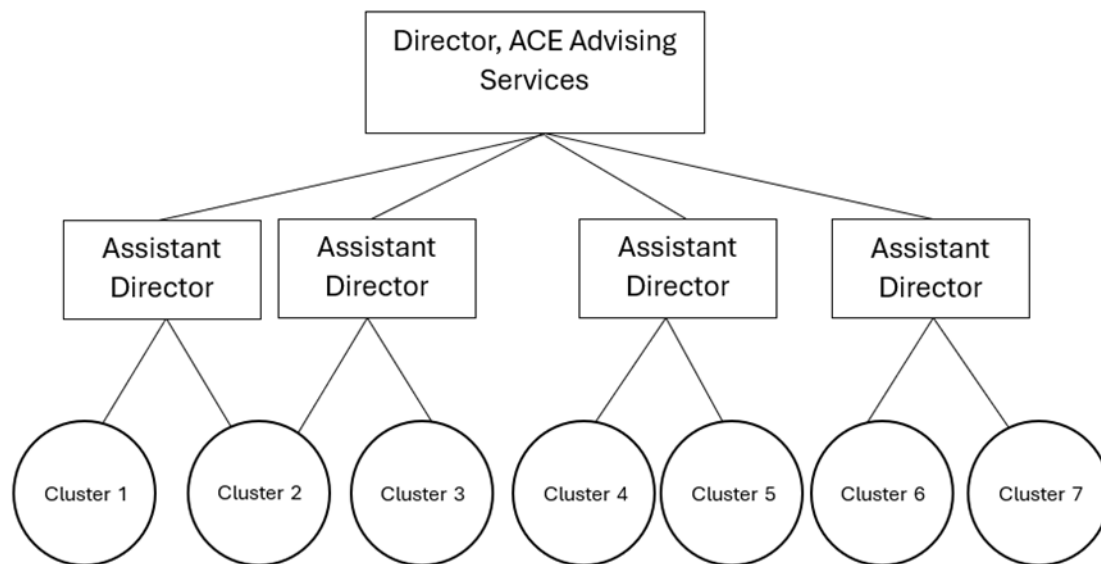
## Table of Contents

<b>Revised Advising Structure .....</b>	<b>2</b>
<b>The HERD Academic &amp; Career Clusters .....</b>	<b>2</b>
<b>Academic &amp; Career Cluster Descriptions .....</b>	<b>3</b>
Artificial Intelligence, Physical Sciences, & Engineering .....	3
Business & Economics .....	3
Communications, Arts, & Humanities .....	3
Exploratory Pathways .....	3
Health, Education, & Human Services .....	4
Preprofessional Pathways .....	4
Social, Behavioral, Life, and Research Sciences .....	4
Notes on Artificial Intelligence and Mutual Inclusivity of Clusters .....	4

**Draft**

## Revised Advising Structure

A revised advising structure was created within The Office of Undergraduate Studies to provide integrated services that provide foundational support for all undergraduate students via seven academic and career clusters.



## The HERD Academic & Career Clusters

The proposed academic and career clusters are listed below.

- **Artificial Intelligence, Physical Sciences, & Engineering**
- **Communications, Arts, & Humanities**
- **Health, Education, & Human Services**
- **Business & Economics**
- **Exploratory Pathways**
- **Preprofessional Pathways**
- **Social, Behavioral, Life, and Related Sciences**

## Academic & Career Cluster Descriptions

### Artificial Intelligence, Physical Sciences, & Engineering

The Artificial Intelligence, Physical Sciences, & Engineering (AIPSE) Cluster aspires to leverage its unique culture and strengths of our students by developing their intellectual abilities and personal growth, instill in them a profound commitment to service and ethical decision-making, and advance knowledge through impactful research and creative work. AIPSE develops leaders who are inspired to serve humanity through their knowledge and innovation and forging technologies, sciences and engineering that impact the Black community, as well as promote greater social prosperity.

### Business & Economics

The Business and Economics (B.E) cluster provide students with a superior global business management and economics education. The BE cluster supports entrepreneurship, for-profit and non-profit leadership, macro and microeconomic research, fiscal and monetary policy, and other pathways that require mix of people and technical skills, motivation, and creativity. The BE cluster supports future world leaders in the development of new knowledge, job creation, and solutions to major business and social problems.

### Communications, Arts, & Humanities

The Communications, Arts, and Humanities (CAH) cluster prepares graduates to exercise global leadership within and across diverse communities, locally, nationally and globally through media, performing and visuals arts, humanities research, professional practice, creative works. The CAH cluster emphasizes creativity, innovation, creation of new art forms, entrepreneurships, social justice, and deep mastery of skills and relevant technology.

### Exploratory Pathways

The Exploratory Pathways (EP) cluster is the academic home for undeclared and transfer students who are unsure of their options or are exploring a range of pathways. The EP cluster assists students with creating exploratory plans and provides structured guidance leading to major declaration. The EP cluster emphasizes self-discovery, interest inventories, and career engagements. Academic and career plans are designed to induce purposeful and productive co-curricular activities, such as research, study abroad, service

learning, and internships. Advisors within the EP cluster help students connect with other academic and career clusters to access programming that will inform decision-making for major declaration.

### Health, Education, & Human Services

The Health, Education and Human Services (HEHS) cluster prepares students to pursue majors and careers in the diverse and exciting world of Health, Education and Human Services. The HEHS cluster seeks to enhance human well-being and transform those human, organizational, social and economic conditions which impact African Americans, Africans in the Diaspora, U.S. citizens, marginalized and thriving communities, and the global community through service-learning, discovery, research, partnerships, and innovative practices.

### Preprofessional Pathways

The Preprofessional Pathways cluster is comprised of interdisciplinary majors at Howard that offer traditional and accelerated pathways to professions that require study beyond the bachelor's degree (e.g. architecture, law, medicine, dentistry, pharmacy, speech pathology, physical/occupational therapy, and social work). The Preprofessional Pathways cluster encourages students to engage in purposeful and productive co-curricular activities, such as research, study abroad, service learning, internships, and test preparation to help them prepare to engage rigorous graduate study across the professions.

### Social, Behavioral, Life, and Research Sciences

The Social, Behavioral, Life, and Research Sciences (SBLR) cluster is an interdisciplinary field that studies human behavior in social contexts, focusing on the ways in which individuals and groups interact, make decisions, and influence each another. The SBLR cluster draws from multiple disciplines such as sociology, psychology, biology, anthropology, political science, and human geography to understand how social structures, cultures, organisms, institutions, and environments shape human actions, well-being, and attitudes.

### Notes on Artificial Intelligence and Mutual Inclusivity of Clusters

Artificial intelligence (AI) is explicitly identified in one cluster. However, given its interdisciplinary and rapidly evolving nature, AI programming will be pervasive across all clusters. Moreover, The HERD Academic and Career clusters are not mutually exclusive,

but exist to promote professional learning communities that support persistence, retention, graduation, and post-graduate outcomes. As such, some cluster-based events will be restricted to a subset of majors and minors whereas other cluster-specific events will be open to all students.